



THE
RESERVE

Exclusive Boutique Hotel

SAVOY *signature*

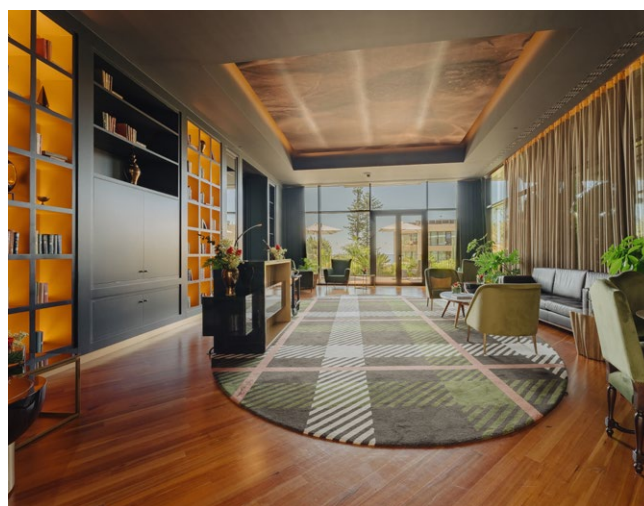




The Reserve is delighted to offer a remarkably personalized service available to our guests. This unparalleled service is designed to anticipate and accommodate all requests and requirements of our esteemed guests, contributing to a truly luxurious and bespoke experience, be it a memorable holiday or a successful business trip.

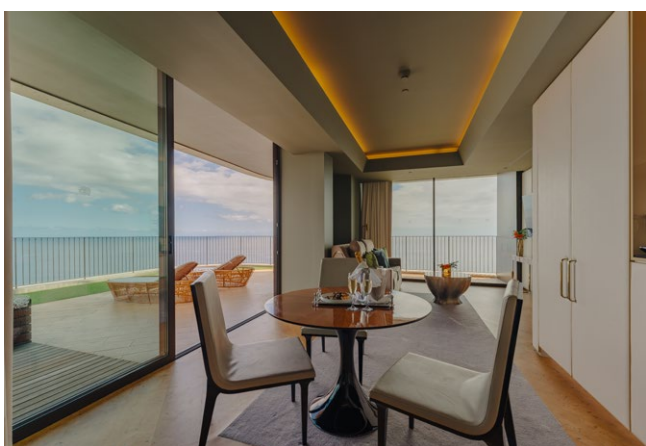
Our guests are granted access to a dedicated escort service throughout the airport on arrival and on departure at Madeira International Airport, including access to an exclusive lounge.. In addition, the Jacarandá Club provides a delectable à la carte breakfast to start your day.

We take pride in offering the services of a dedicated GEPA (Guest Experience Personal Assistant), available around the clock. The GEPA's primary focus is to meticulously tailor every aspect of your stay to perfection, no matter how small the detail may be. As the single point of contact for all guest needs, the GEPA liaises with all hotel departments and external parties to ensure a seamless and flawless experience.



LOCATION | GETTING THERE

Avenida do Infante, 25
9004-542 Funchal
Madeira, Portugal



ACCOMMODATION

Whether you're seeking a romantic getaway, a peaceful retreat, or a memorable vacation, our boutique hotel with 40 sea-view rooms, ranging from deluxe to pool suites, and one rooftop presidential suite, The Retreat, that embodies the sheer hideaway, is the perfect destination. Immerse yourself in luxury, comfort, and natural beauty, and create cherished memories that will last a lifetime.

Deluxe Room

- Room Size - From 35 sq.m/370 sq. ft
- Capacity - 2 Adults
- King-size bed
- Bathroom with walk-in shower
- Individually adjustable air conditioning
- Flat 49"/55" TV screen
- Balcony
- Ocean views

Deluxe Suite

- Room Size - From 66 sq.m/710.42 sq. ft
- Capacity - 3 Adults or 2 Adults + 1 Children (2-12 years)
- King-size bed
- Sitting area
- Bathroom with walk-in shower or walk-in shower & bathtub
- Lounge
- Individually adjustable air conditioning
- Flat 55" TV screen
- Terrace
- Expansive ocean & city views
- Extra beds available upon request

Pool Suite

- Room Size - From 89 sq.m/957.99 sq. ft
- Capacity - 3 Adults or 2 Adults + 1 Children (2 - 12 years)
- King-size bed (Twin or Double)
- Sitting area
- Bathroom with walk-in shower or walk-in shower & bathtub
- Lounge with dining area
- Individually adjustable air conditioning
- Flat 55" TV screen
- Extra beds available upon request
- Terrace with private plunge pool
- Ocean and bay views

Complimentary Services & Amenities

- Tea & coffee making facilities | Nespresso coffee machine
- Premium amenities
- Early check-in from 09:00 and late check-out until 22:00, upon availability and with a 48-hour minimum notice
- In-room check-in, or at the dedicated check-in lounge, with complimentary welcome drink – Hotel's selection.
- Unpacking & Packing service
- Pressing service: one complimentary garment per guest, per day
- In-room breakfast upon request
- A culinary greeting upon arrival and a daily premium greeting at turndown
- One complimentary luxurious bathing experience during your stay
- Complimentary newspapers, upon request
- In-room check-out or at the Jacarandá Club, with a farewell drink
- Parking



RESTAURANTS & BARS

JACARANDÁ CLUB

At Jacarandá Club, you can indulge in a wide array of snacks and drinks throughout the day, with the added convenience of lunch and dining options. This versatile and stunning area is also where you can enjoy relaxing and lounging in complete privacy.

NIKKEI

In the evenings, the 16th floor is ready for everyone to enjoy the Nikkei project. Nikkei sets you off to indulge in tasteful and eye-pleasing interpretations of Japanese dishes with flavours and techniques from around the world!

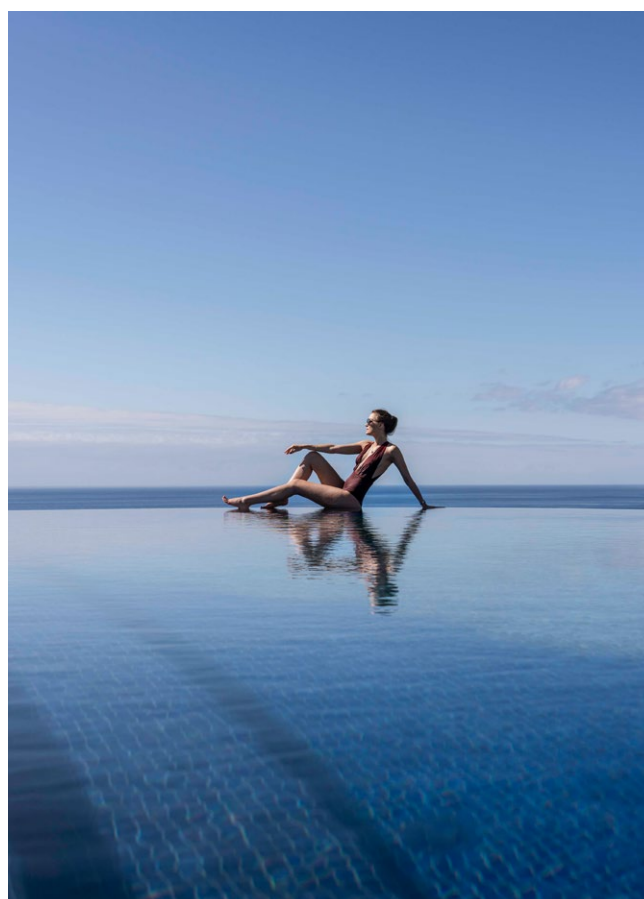
FACILITIES

SWIMMING POOLS & SEA ACCESS

Infinity pool, jet pool & solarium with pool butler service.

SEA ACCESS THROUGH SISTER HOTEL ROYAL SAVOY

The exceptional location of the maritime platform allows our guests to access the ocean comfortably.





SAVOY PALACE

Tribute Cosmopolitan Resort

SAVOY *signature*



Due to its location, The Reserve benefits from all the facilities and services of the incredible Savoy Palace.

A MEMBER OF



THE LEADING HOTELS
OF THE WORLD®



SPA & WELLNESS

LAUREA SPA

The Laurissilva Forest is Madeira's unique type of forest of vivid greens and a striking floral palette, involving you in stimulating scents mixed with the salty Atlantic breeze. It is healing and beautiful.

This magical island garden was the inspiration to create the Laurea Spa.

In all its stimulating diversity, you can find many ways to feel the soothing effects of our treatments.

Facilities

- 11 Treatment rooms
- Sauna
- Jacuzzi
- Steam room
- Ice fountain
- Sensorial Showers
- Halotherapy room
- Relaxation room
- Fitness Center
- Champagne & Nails bar
- Gym

Complimentary Services

Complimentary unlimited access to the Laurea Spa wet area for guests aged 16+.

Reservation priority at Laurea Spa (please, make your request a minimum of 24 hours before to guarantee a reservation).



SAVOY PALACE SWIMMING POOLS

Main Swimming Pool & Solarium

Take a dip, soak up the sun and enjoy yourself in our incredible pool.

Galáxia Skypool

High above, where all the most Instagrammable views are, discover our adults-only rooftop with its memorable infinity pool and swim into the horizon.

Indoor Heated Pool

Located next to the Laurea Spa's facilities, our heated indoor pool is truly unique!

Kids Pool

It's cool off time for both adults and children. Relax while they splash and play in all safety.



RESTAURANTS & BARS

GALÁXIA SKYFOOD

A superior dining experience, a constellation of flavours from around the globe.

Open for dinner Tuesday to Sunday

PAU DE LUME

Delight yourself with the most authentic oven dishes, prepared with ancient techniques based on the use of fire.

Open for brunch, lunch and dinner

TERREIRO

Inspired by local traditions, Terreiro restaurant offers varied and flavourful gastronomic experiences with a touch of creativity.

Open throughout the day and into the night

ALAMEDA RESTAURANT

The Mediterranean meets the Atlantic, where the tradition of the Latin tables boosts tropical flavours. Taste this beautiful encounter in our poolside terrace restaurant and bar with a pizza oven and coal-fired grilled specialities.

Open throughout the day

ORCHIDACEAE ATELIER & HIBISCUS RESTAURANT

A delicious gastronomical spread blossoms for your delight.

Open for breakfast and dinner

GALÁXIA SKYBAR

A celestial cocktail selection! Above us, only Madeira Island's sky.

Open throughout the day and into the night

LOBBY LOUNGE & BAR

Located in the main lobby, this is our chance to welcome your story into ours.

Open throughout the day and into the night

VIMES ENTERTAINMENT BAR

Original with origins, it's a place for friendship from the beginning of time to the end of the night.

Open throughout the day and into the night

CIGAR LOUNGE

Complimentary services

Reservation priority at Savoy Signature restaurants (please, make your request a minimum of 24 hours before to guarantee a reservation).